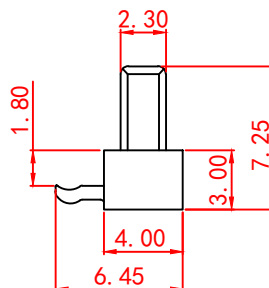
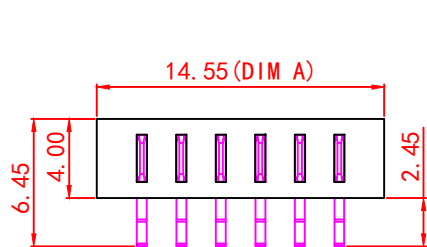


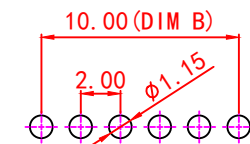
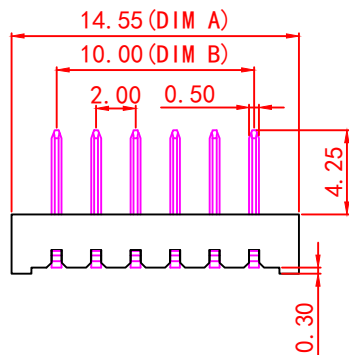
RoHS  
Compliant

SYMBOL	REVISION	APPROVAL	DATE



### SPECIFICATIONS

- ELECTRICAL CHARACTERISTICS:
  - 1-1. RATING: DC 12V 5A/Pin
  - 1-2. CONTACT RESISTANCE: 30mΩ MAX(INITIAL)
  - 1-3. DIELECTRIC WITHSTANDING VOLTAGE: 500V AC FOR ONE MINUTE
  - 1-4. INSULATION RESISTANCE: 500MΩ MIN, MEASURED BY 500V DC
- LIFE TEST: MECHANICAL LIFE TEST 5,000 CYCLES.
- TEMPERATURE RISE : 30° C MAX



RECOMMENDED PCB LAYOUT  
TOP VIEW (. XX ± 0.05)

No. of Pins	Dimension	
	DIM A	DIM B
2Pin	6.55	2.00
3Pin	8.55	4.00
4Pin	10.55	6.00
5Pin	12.55	8.00
6Pin	14.55	10.00
7Pin	16.55	12.00
8Pin	18.55	14.00
9Pin	20.55	16.00
10Pin	22.55	18.00
11Pin	24.55	20.00
12Pin	26.55	22.00
13Pin	28.55	24.00
14Pin	30.55	26.00
15Pin	32.55	28.00
16Pin	34.55	30.00

2	HOUSING	LCP	1	GRAY
1	CONTACT TERMINAL	C2680	6	Au PLATED
NO.	PARTS	MATERIAL	QTY.	FINISHING

广东诺德电子科技有限公司

PART NAME	CONNECTOR		DRAWING	Y. C. Zhang	DWG. No.
PART NO.	ND-A02M-R4 系列		CHECK	G. C. Chen	REV. A1
UNIT: mm	TOLERANCE	X. ±0.15 X.* ±1°	APPROVAL	DATE	10-10-2021
	OTHERWISE	X.X ±0.10 X.X* ±0.5°			
		X.XX ±0.05 X.XX ±0.05°	SCALE	3:1	PAGE
		X.XXX ±0.005 X.XXX ±0.005°			1 OF 1

COPYRIGHT RESERVED, PLEASE DO NOT COPY.