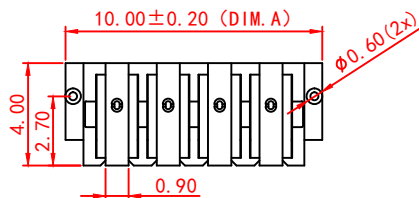
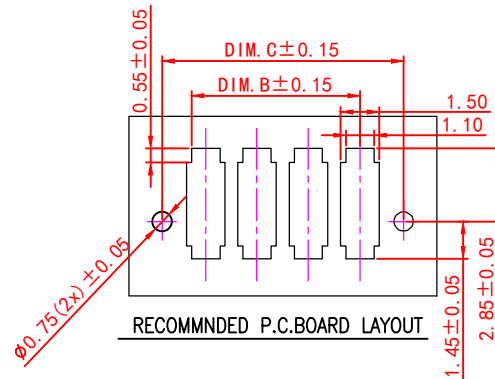
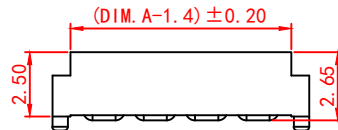
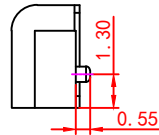
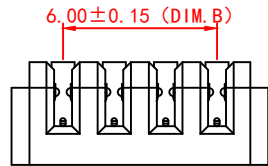
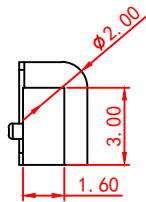
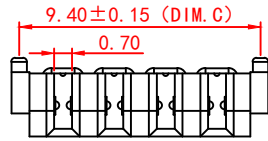
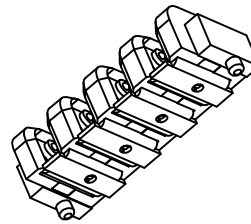


RoHS  
Compliant

SYMBOL	REVISION	APPROVAL	DATE

No.of Pins	Dimension		
	DIM.A	DIM.B	DIM.C
02	6.00	2.00	5.40
03	8.00	4.00	7.40
04	10.00	6.00	9.40
05	12.00	8.00	11.40
06	14.00	10.00	13.40
07	16.00	12.00	15.40
08	18.00	14.00	17.40
09	20.00	16.00	19.40
10	22.00	18.00	21.40

Material  
 Insulator : LCP  
 Contact : Phosphor Bronze  
 Contact Plated : Gold over Nickel or Tin  
 Specification  
 Current Rating : 3A  
 Instant Current : 5A  
 Contact Resistance : 30mΩ  
 Insulation Resistance : 100MΩ  
 Dielectric Voltage : 500V  
 Operating Temperature : -40°~105°



2	HOUSING	LCP	1	GRAY
1	CONTACT TERMINAL	PHOSPHOR BRONZE	6	Au PLATED
NO.	PARTS	MATERIAL	QTY.	FINISHING

广东诺德电子科技有限公司

COPYRIGHT RESERVED, PLEASE DO NOT COPY.

PART NAME		CONNECTOR		DRAWING	Y.C.Zhang	DWG.No.	
PART NO.		ND-A20F-C 系列		CHECK	G.C.Chen	REV.	A1
UNIT: mm	TOLERANCE	UP TO 5	±0.2	APPROVAL	DATE	08-08-2018	
	OTHERWISE	ABOVE 5 ~ 30	±0.3				
		ANGLE	0° ± 3'	SCALE	2:1	PAGE	1 OF 1