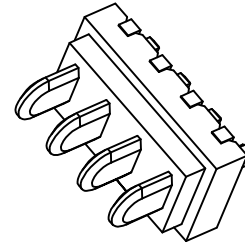
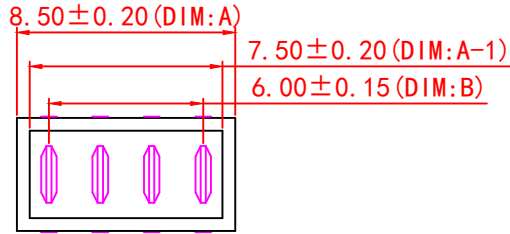


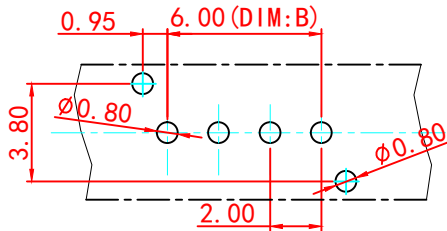
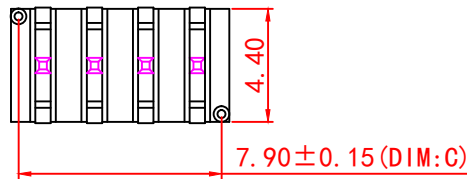
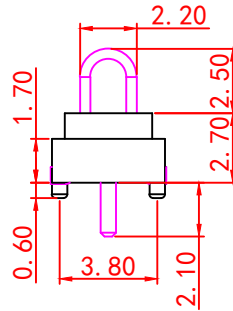
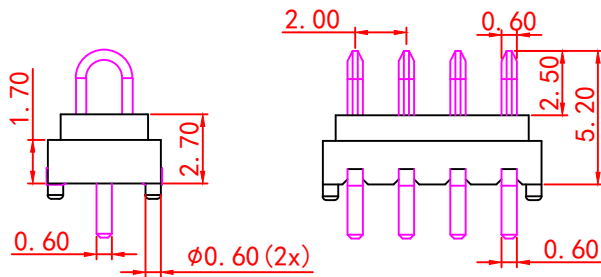
RoHS  
Compliant

SYMBOL	REVISION	APPROVAL	DATE



3D VIEW

No.of Pins	Dimension		
	DIM.A	DIM.B	DIM.C
02	4.50	2.00	3.90
03	6.50	4.00	5.90
04	8.50	6.00	7.90
05	10.50	8.00	9.90
06	12.50	10.00	11.90
07	14.50	12.00	13.90
08	16.50	14.00	15.90
09	18.50	16.00	17.90
10	20.50	18.00	19.90



RECOMMENDED P.C.BOARD LAYOUT

Material  
 Insulator : LCP  
 Contact : C2680  
 Contact Plated : Gold over Nickel or Tin  
 Specification  
 Current Rating : 3A  
 Instant Current : 5A  
 Contact Resistance : 30mΩ  
 Insulation Resistance : 100MΩ  
 Dielectric Voltage : 500V  
 Operating Temperature : -40°~105°

2	HOUSING	LCP	1	GRAY
1	CONTACT TERMINAL	C2680	4	Au PLATED
NO.	PARTS	MATERIAL	QTY.	FINISHING

广东诺德电子科技有限公司

COPYRIGHT RESERVED, PLEASE DO NOT COPY.

PART NAME		CONNECTOR		DRAWING	Y.C.Zhang	DWG.No.	
PART NO.		ND-A20M-R1 系列		CHECK	G.C.Chen	REV.	A1
UNIT:	TOLERANCE	UP TO 5	±0.2	ANGLE	APPROVAL	DATE	08-08-2018
	mm	ABOVE 5~30	±0.3				
OTHERWISE	ABOVE 30	±0.5					
		ANGLE	±3'				