

RoHS  
Compliant

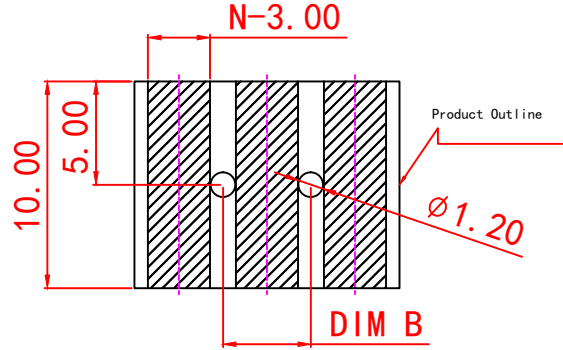
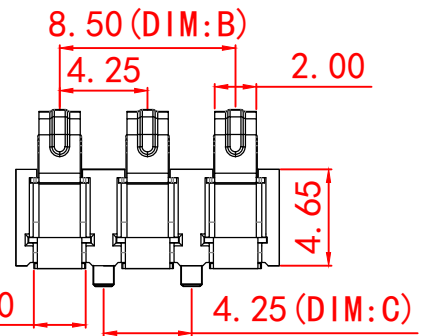
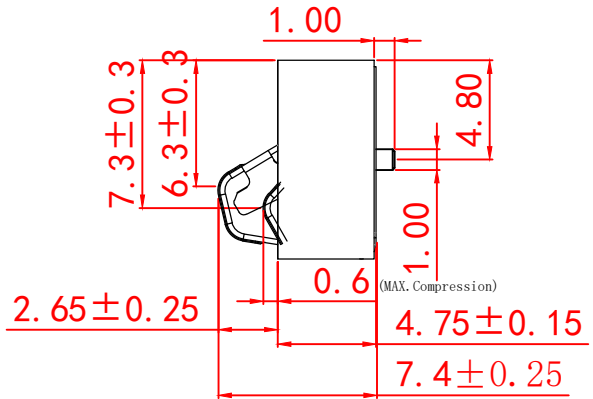
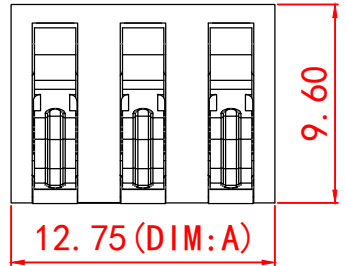
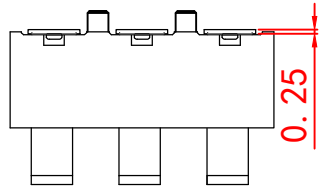
SYMBOL	REVISION	APPROVAL	DATE

**SPECIFICATIONS**

- ELECTRICAL CHARACTERISTICS:
  - 1-1. RATING: DC 12V 5A
  - 1-2. CONTACT RESISTANCE: 50mΩ MAX (INITIAL)
  - 1-3. DIELECTRIC WITHSTANDING VOLTAGE: 500V AC FOR ONE MINUTE
  - 1-4. INSULATION RESISTANCE: 500MΩ MIN, MEASURED BY 500V DC
- FORCE: 0.6mm CONTACT TRAVEL: 600gf Max.
- LIFE TEST: MECHANICAL LIFE TEST 5,000 CYCLES.
- TEMPERATURE RISE : 30° C MAX

1  
2  
3  
4

1  
2  
3  
4



Pin数 (N)	PART NO.	DIM A	DIM B	DIM C
3Pin	ND-3P-4.25PH-7.4HD-F	12.75	8.5	4.25
4Pin	ND-4P-4.25PH-7.4HD-F	17.0	12.75	8.5
5Pin	ND-5P-4.25PH-7.4HD-F	21.25	17.0	12.75
6Pin	ND-6P-4.25PH-7.4HD-F	25.5	21.25	17.0

NO.	PARTS	MATERIAL	QTY.	FINISHING
2	HOUSING	LCP	1	GRAY
1	CONTACT TERMINAL	PHOSPHOR BRONZE	3	Au PLATED

东莞市诺德电子有限公司

COPYRIGHT RESERVED, PLEASE DO NOT COPY.

PART NAME	CONNECTOR	DRAWING	Y. C. Zhang	DWG. No.
PART NO.	ND-4.25PH-7.4HD-F 系列	CHECK	G. C. Chen	REV. A1
UNIT: mm	TOLERANCE	ANGLE	APPROVAL	DATE
	OTHERWISE	0° ±3°	SCALE	PAGE

F E D C B A